

Esther Children's
Musical
March 26 During
8:45 & 11 a.m.
Services



ESTHER!



Daylight Saving
Time
Sunday, March 12

Thinking about
Joining Asbury?
Membership
Classes in March!
See page 8

New Members

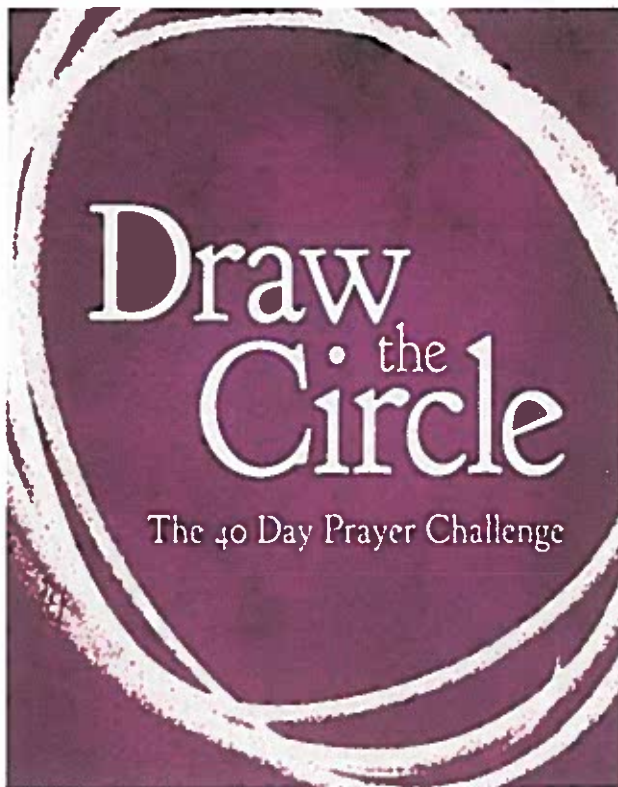


Invite Someone to
Join Us for Our
Lenten Services



the ASBURIAN

Newsletter of Asbury United Methodist Church
VOLUME 60, ISSUE 2 March 2017



INSIDE THIS ISSUE

WORSHIP

Pastor's Column	2
Music	3

EXPLORE

Sunday Schools	4
----------------	---

CARE

Asbury News	5
-------------	---

SERVE

UMW	4
Asbury Service Project (ASP)	9
Opportunity Shop	9

FINANCE	6
---------	---

CHURCH and SOCIETY	7
--------------------	---

LEADERSHIP	10
------------	----

ACDC	11
------	----

CHURCH ANNOUNCEMENTS	11
----------------------	----

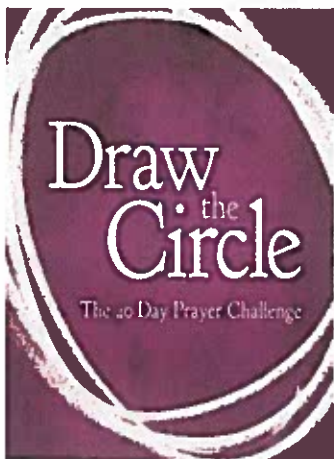
Join Us for Lent!

OFFICERS OF OUR CHURCH

Calvin Peacock, Leadership Team Chair
Dale Cropper, Leadership Team Vice-Chair
Kim Bradshaw, Staff-Parish Relations Chair
Carol Walston, Board Of Trustees Chair
Sara Lewis, Finance Committee Chair
Sharon Dashiell, ACDC Board Chair
Mick Roberts, Lay Leader
Sara Lewis, UMW President
Suzanne Press, Co-Chairman, BOD, Opportunity Shop
Priscilla Basehart, Co-Chairman, BOD, Opportunity Shop
Carlton Bradshaw, Chairman, BOD, ASP

Editor: Karen Corwin

PASTOR'S MESSAGE



Prayer: A 40 Day Lenten Challenge

This year for the season of Lent, your pastors are challenging you to commit to 40 days of prayer starting this month. Lent begins with Ash Wednesday, March 1 and ends the Saturday before Easter Sunday, April 15. If you haven't already, pick up the book *Draw the Circle: The 40 Day Prayer Challenge* by Mark Batterson (available on Amazon.com for about \$10). Mark writes that if we press into God's presence like never before, we will experience God like never before. He also says that if you are willing to pray through the roadblocks to prayer that God will also break through into our lives. Though these statements from Mark might sound a little cliché, they do ring true with my experiences and personal understanding of prayer. Prayer is one of God's greatest gifts to us that we might connect with him

personally and communally as God's people. I believe that prayer is also a reflection of how much we trust God and his promises to us. Regular and consistent prayer means that we believe the words of Jesus when he says in *Luke 11:9-10*, "Ask and it will be given to you; seek, and you will find; knock, and it will be opened to you. For everyone who asks, receives; he who seeks, finds; and to him who knocks, it will be opened."

The most important example of prayer to me was my friend Jason. His mom wasn't a Christian and she had a terminal genetic illness that affected her heart and lungs. For more than a decade, my friend prayed that his mom would come to know and love Jesus. He didn't push her or coerce her but he simply prayed. One day Jason was coming home from work and she pulled him aside into the living room. She asked him to pray with her to accept and believe in Jesus Christ. Jason prayed with her and as they wept together, Jason knew his many years of faithful prayer had been answered. His mother died a few months later. If Jason can commit to more than 10 years of prayer, maybe we can commit to 40 days. Even if you have a daily prayer habit or commitment already, strive to commit more of your time to prayer during the season of Lent.

Benita and I will also be preaching on prayer. We will talk about how Jesus modeled prayer for us, how we can pray God's will, how prayer can make a difference, and how prayer changes us. Along with the prayer challenge and sermon series, there will be the children's musical production of *Esther*. The story will be told of how Esther was able to change so much by her commitment to her people. Let us commit to our faith this season as we journey together in prayer and await the amazing work of God in us and through us.

Eric Warner, Associate Pastor

Connection Cards Are Important

Don't forget your Connection Card. Connection cards are just that: they let the church connect with you and help you on your faith journey. By providing:

- ◆ Changes in home address, email or phone numbers
- ◆ Prayers for a loved one
- ◆ Opportunities to participate in an activity or a church event
- ◆ A welcome to new visitors

Please help us with this new method of caring for and connecting with our church family and visitors. Thank you!



We have some amazing events coming up in the next couple of months that you won't want to miss! Please mark your calendars!

Wednesday Lenten Organ Recital Series:

March 15 Dr. Michael Stefanek, March 22 Taylor Harvey, March 29 Veronica Tomanek, April 5 Susan Zimmer These programs will start at noon and last approximately 40 minutes and provide a great opportunity for mid-week reflection during the day over the lunch hour.

March 26 at both 8:45 a.m. and 11 a.m. services the children's musical, "Esther" by Erik Whitehall will be presented in Fellowship Hall.

April 8 at 4 p.m. there will be a Handbell Concert featuring Asbury's very own handbell ensembles: Jubilate Bells, Chiming Belles, Revelation Ringers, and Kingdom Kids Ringers.

Palm Sunday, April 9 the Chancel Choir will be presenting a cantata entitled, "Amazing Love" by Lloyd Larson & Joel Raney at 8:45 and 11 a.m. services in the Sanctuary. This powerful work combines narrations, scripture readings, and a diverse selection of dramatic songs.

Easter Sunday, April 16 festive music will be featured at all services.

April 28-30 We are pleased and honored to have renowned composer, arranger and musician Mark Miller in residence. This weekend will provide opportunities for singers and directors to work with this amazing talent in rehearsals and special workshops. Singers will also be performing in a concert here at Asbury on Saturday, April 29 at 7 p.m. Mark will be also be providing musical leadership at our Sunday morning worship services on April 30. More details will be coming soon!

Dr. Michael Stefanek, Director of Music Ministries



Esther, a musical by Eric Whitehall, will be performed by The Kingdom Club on Sunday, March 26 at our combined 8:45 and 11 a.m. services in Fellowship Hall!

The Wired Word Class 10 a.m.

Have you ever considered joining an adult Sunday school class, but don't feel like you have a lot of time for preparation?

Why don't you consider joining us in the Catley Library at 10 a.m. for *The Wired Word*? Each week you will receive a lesson via email concerning a current national or international event or topic. The lessons contain thought provoking questions and relevant scripture, which leads to interesting classroom discussions. There are no materials to purchase and the lessons are independent of one another, so if you miss a week you aren't falling behind. If you are interested in joining us, just send John and Shelly Marshall an email at mrsjmarshall@msn.com so they can add you to the list to receive your lesson.

The Lounge Class 9:50 to 10:45 a.m.

The Lounge Class, meeting in the Mackey Room, is designed to have the class members select and lead the weekly topic and encourage dynamic discussions using contemporary and traditional materials in the second half of the class.

March 5

Jeanne Duval: Lisa Garcia-"Life Crisis Center"

March 12

Barbara Emery: "Soul Keeping" Part 2

March 19

Barbara Emery: "Soul Keeping" Part 3

March 26

Nancy Rubenson: Donna Clark-"Help & Outreach Point of Entry" (H.O.P.E)

Bible 101 Study Class 10 a.m.

The Bible 101 class has been studying the Book of Genesis since January, but we will observe the Lenten season with a special study, *Creed*, by Adam Hamilton, a fresh look at the Apostles Creed. Adam Hamilton is a well-known author and pastor of a large United Methodist Church in Kansas. After Easter we will continue our study of the Book of Genesis. All are welcome to attend the class that meets every Sunday at 11:00 a.m. in the Fox Room.

UMW Circle March Meetings

Dorcas: Tuesday, March 14, at 7 p.m. at the home of Jane Hiddleston

eCircle: monthly newsletter online

Eve: Wednesday, March 15, at 7:15 p.m. in the Mackey Room, hosted by Allison Canada and Melissa Nichols

Joanna: Monday, March 13, at 10 a.m. at the home of Carol Bisker

Hyde Scholarship Deadline to Apply March 19

The Hyde Scholarship is presented to one or possibly two students who meet specific criteria, such as: be a member of Asbury UMC, a graduate of a Wicomico County public high school, active in other church-related activities, etc.

Applications, as well as brochures, are available now in the Welcome Centers and the church office and are due back by March 19. The scholarship(s) will be presented April 23.



Scholarship

TWO NEW POSITIONS AVAILABLE AT ASBURY!

(1) Director of Youth and Family Ministries

Asbury UMC is seeking a full-time Director of Youth and Family Ministries (full benefits available), with a start date of July 1, 2017. This director ministers primarily to grades 6-12 including involvement of the families of the youth in the life of the congregation and the youth ministry program. *Must have experience in youth and family ministries.*

(2) Director of Adult Spiritual Formation and Membership

Asbury UMC is seeking a full-time Director of Adult Spiritual Formation and Membership (full benefits available), with a start date of July 1, 2017. This director will have the primary responsibility for developing, educating and implementation of small group ministries at Asbury. This director will also be responsible for following up with all visitors, developing a volunteer base for follow-up, directing membership classes and connecting people to groups and ministries available at Asbury. *Must have experience in small group ministry development.*

Qualifications for both positions are:

- A minimum of a bachelor's degree in Christian Education or Christian Ministry from an accredited college or university
- Strong organizational, administrative and communication skills
- A self-starter, creative and able to work independently as well as with the church ministry team
- Strong interpersonal skills
- Maintain personal spiritual growth
- Knowledge of and comfort using The Microsoft Office package and social media

The complete job description and application can be found on Asbury's web page at asburyweb.org by clicking download to print, or by calling the church office at 410-749-2131.

FINANCE

As you can see from the finance chart the operating budget ended January with a net of \$26,463. This is due to many contributors prepaying their giving/pledge for 2017 in 2016. We had over \$30,000 given at the end of last year for this year's budget (as a reference last year we had \$18,000 in prepayments). Several of these donations were made by donating stock. Did you know you can donate stock to Asbury for your giving? Once we receive the stock donation, it is sold and the proceeds are sent to the church on your behalf. This is just one of the many ways you can donate to the church – other ways include online giving through our website, electronic funds transfer, by mail and of course you can drop your cash and/or check in the offering plate during the worship service. If you have any questions about ways to give, please do not hesitate to contact me.

Janice Wilkinson

	January 2017
Pledge Contributions	\$98,680
Plate Contributions	\$1,480
Special Contributions	\$0
Endowment	\$0
Rentals	\$8,148
Interest-checking/mma/cd	\$16
Gain/loss on stock	(\$504)
Total Income	\$107,820
Property Expenses	\$26,228
Ministry Expenses	\$22,040
Administrative Expenses	\$9,017
Apportionments	\$13,723
Employee Benefits	\$10,349
Total Expenses	\$81,356
Net	\$26,463

Charitable Giving

With the tax deadline looming, many of us are evaluating the prior year—earnings; taxes withheld; investment performance; and charitable giving. This year I have decided to add another step—reflecting on the impact of charitable giving. By giving to Asbury, what type of return was recognized by our investment in ministry and missions? Some things are tangible—the youth and young adults we see participating in ASP; the guests served at CESP; the Asbury youth attending Camp Pecometh. Other benefits are much more difficult to measure but of equal significance. The positive impacts of Rainbows, VBS, and so many other programs are immeasurable.

Thank you for your participation in the ministry and missions of Asbury. The impact of your charitable giving is incredible.

Sara Lewis



POSITION ON IMMIGRATION The United Methodist Church



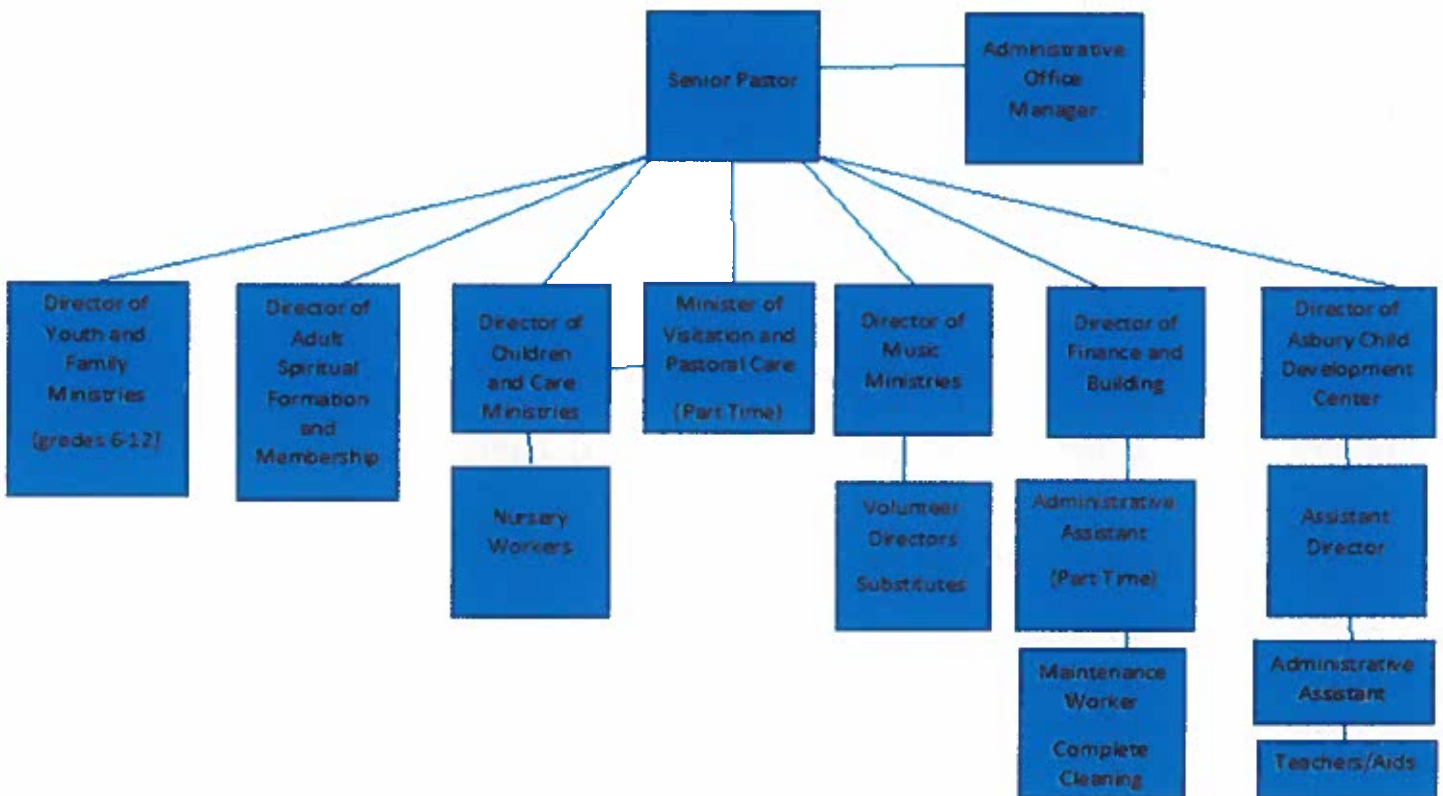
At this time there is much disagreement about public policy regarding immigration. How should we as Christians respond to the plights of the immigrants in our midst and of the refugees seeking asylum in our country? What is the official position of our church on this issue? Addressing this issue, the General Board of Church and Society under the leadership of Rev. Dr. Susan Henry-Crowe issued a statement which quotes policy found in the 2016 Book of Resolutions #3281, "Welcoming the Migrant to the United States". *"The General Board of Church and Society of the United Methodist Church calls upon all policy makers to work for just and compassionate migration policies that affirm the worth, dignity, and inherent value and rights of all persons regardless of nationality or legal status."*

Rev. Henry-Crowe continued:
"As followers of Jesus, we reject in the strongest terms efforts to expand the U.S. Mexico border wall, penalize communities providing sanctuary, halt refugee resettlement, or impose a religious test for those facing forced immigration."

The full text of the statement is available online and on the Church and Society table in the Welcome Center. As members of the United Methodist Church, it is important that we prayerfully consider these recommendations.

Virginia Mayer and Louis Rimbach, Church and Society Ministry

**Asbury United Methodist Church
Approved Organizational Chart – Effective July 1, 2017**

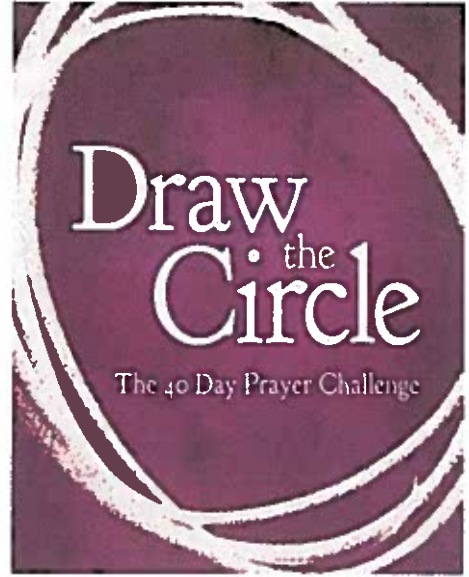


ASBURY NEWS

Lenten Devotional

During the Lenten Season we will be doing a series on prayer. I am asking you to join us beginning on March 1, Ash Wednesday, by reading *Draw the Circle: The 40-Day Prayer Challenge* by Mark Batterson. It is a daily devotional that helps us to pray often and boldly. It can be purchased on line for about \$10 or if you need help, please call the church office for assistance.

Pastor Benita Harris



Church Membership Classes

The next church membership classes will be held on Thursday nights at 7 p.m. March 2, 9, and 16, or on Sundays after church at 12:15 p.m. March 5, 12, and 19. If you are interested in membership or have any questions, contact Pastor Eric in the church office or email at eric@asburyweb.org.



Easter Lilies-Order Now!

Easter lilies will be placed on the altar this year on Sunday, April 16. If you wish to give an Easter lily in honor or in memory of a loved one, please fill out form and return it with payment (\$8.00 each) to church office by Wednesday, April 12. Forms are now available in the Welcome Centers and in the church office.

Boy Scout Troop 151 Spaghetti Dinner

Boy Scout troop 151 will be holding a spaghetti dinner on Saturday, March 18, from 5 to 7:30 p.m. in Fellowship Hall. Only \$8.00 per person (children 6 and under eat free). Menu: Spaghetti with meatballs, bread, salad, dessert, and drinks. Tickets are still available: email asburytroop151@gmail.com, available at the door, or carryout is available, too!

Eastern Shore Mission of Mercy March 10-11

Mission of Mercy is a free adult dental clinic provided by volunteer dental professionals and a volunteer staff of several hundred people. All dental services will be provided by licensed dentists and hygienists who are donating their services for this event. Volunteers are needed. Please visit the website for information on how you can help: www.easternshoremom.org.



The Opportunity Shop

158 W. Market Street Salisbury, Maryland 21801 410-749-9777
Store Hours: Thursday and Saturday 10 a.m. to 3 p.m.

Donations can be dropped off Monday and Friday 8:30 a.m. to 12 noon

SERVING OTHERS

Opportunity Shop

With spring only a few calendar days away and everyone thinking about spring cleaning, please remember the Opportunity Shop. We are again in need of gently used clothing, especially spring and summer pieces. It is with your donations that we are able to help many local organizations who do so much for our community. We not only take gently used clothing, but a lot of those items you may clean out of your basement, attic, or garage: dishes, vases, books, small furniture pieces, working electronics, kitchen gadgets, linens, rugs, toys, pictures, and baby items. The shop can receive your donations on Monday & Friday from 8:30 a.m. to 12 noon or Thursday & Saturday from 10 a.m. to 3 p.m.

Asbury Service Project

Your Asbury Service Project team has been working hard preparing for our 44th mission trip to Appalachia in June. We do not yet know our destination, but it is likely to be somewhere in West Virginia. Thank you for your prayers, presence and financial support of this ministry!

Of course, this mission serves our local community throughout the year, in addition to the service we do in Appalachia in June. This year we have served and continue to serve dinners at the Christian Shelter the first Sunday of each month, and we also served a pancake dinner to our homeless CESP guests. Once again, we are partnering with Chesapeake Housing Mission to build wheelchair ramps for four needy families in our community.

We have just one more pancake breakfast scheduled for the year; thank you for your generous support at our previous breakfasts, and we look forward to serving you in the future. As always, the breakfast is offered at no charge, but donations to the ministry are graciously accepted. In years' past your generous donations to our fundraisers have covered travel costs and provided additional funding to help the families we serve in Appalachia. Our final pancake breakfast is scheduled for March 12, so come to church hungry!

Our final fundraiser for the year will be a taco and baked potato dinner on Friday, May 12. Mark your calendar, ASP will have your dinner covered that day. Our remaining Work Skills / Safety Training (wheelchair ramp) sessions are scheduled for:

March 18

April 22

May 20

If you have any questions do not hesitate to call me at 410-896-2776.

In His Service, Carlton Bradshaw



ASP
Appalachia
SERVICE PROJECT

THE TIMES, THEY ARE a-CHANGIN'

Change is part of life. Our children are constantly changing as they grow. Often, our democracy changes with each election. We change as we grow in life experiences and our faith. And, Asbury is growing, and with growth comes change.

Asbury has been experiencing increases in the following areas: youth ministries, young family attendance, and new member involvement in the church's leadership, ministries, and the pursuit of their faith walk. These changes have created new opportunities and challenges in how to present Christ to all who seek him at Asbury.

Pastor Benita and the Leadership Team have been listening to the congregation and observing the changes. Last year's congregational survey helped to reinforce the need to address these changes. Additionally, Eric's announcement that he would be leaving Asbury to pursue his calling of ministering to the elderly pointed to the need for church leadership to reassess the existing staff structure to meet these changes.

Pastor Benita presented a preliminary staff reorganization structure to the Staff Parish Relations Committee (SPRC). After discussion and review, the SPRC sent the final organizational structure to the Leadership Team where it was approved. The new structure adds two new paid positions to the staff: Director of Youth and Family Ministries and Director of Adult Spiritual Formation and Membership. The Director of Youth and Family Ministries will be responsible for the 6th through 12th grades. The present Director of Children and Care Ministries, Heather Harmon, is responsible for K through 5th grades. For job requirements, please see page 5.

The skills required for these two new positions are above and beyond what can be expected from an Associate Pastor. Further, there is never a guarantee when requesting an Associate Pastor from the Conference that any of these skills will come with the Associate Pastor, nor how long the associate pastor will be assigned to Asbury. The new positions allow continuity and a higher level of permanency for Asbury. These new positions will be funded from what is currently budgeted for the Associate Pastor's salary.

There has been concern expressed that Pastor Benita's workload will increase too much. Pastor Benita has assured the Leadership Team that the transfer of duties from Eric and herself into this new structure will be very manageable. Pastor Bill will be preaching once a month or more as needed. Please view the current organizational chart, found in the church office and on page 7, for how all of this interacts.

Contact the church office with questions and/or comments for the Leadership Team. We serve the congregation and want to insure responsible transparency.

Next month will be an update on the survey and Bucket List Committees.

Calvin Peacock, Leadership Team Chair

Hebrews 13:8 Jesus Christ is the same yesterday and today and forever.



Member registration and Priority registration was well attended. We still have openings in our 2's – M/W/F & T/TH, 3's – M/W/F & T/TH, 4's – p.m. and Kindergarten classes. Open registration will take place on March 15 at 9 a.m. If you know of anyone interested in any of these classes, please pick up registration information from room #121. If you have additional questions please call Casey Taylor at 410-742-7058. Thank you!

DEATHS

Susan Nock Olds,
1/18/2017
Margaret Townsend Day,
1/21/2017
Loma Dryden Murray,
1/24/2017

MEMORIALS

Ann Brown
Lill Largey

Zella Hall
Don & Leslie Hughes
Maxine Harden

Loma Murray
Sheldon & Isabelle White
Louise Smith
Dennie & Betty Lou
Bloodsworth
Ken & Donna Causey
Mildred Palmer
Harry & Priscilla Basehart
C. Edward & Carol Bayne,
Jr.
Linda Andrews
Charles Sharretts III
Elodie Beale
Ralph & Patricia Causey
Lee & Carolyn Johnson
Charlie & Shirley Silvia
Dianne Dykes
Harry & Pat Cooper
Mary Weber
Mark & Brenda Potts
Sue Erskine
Dayle Rounds
Bill & Shirley Cropper
Werner & Carolyn Gruber

CHURCH ANNOUNCEMENTS

Kenneth Bayne
Frank & Frankie Shipper
Don & Lynn Cathcart
Aaron & Marlene Pulhamus
Lill Largey
Linda Esham
Robert Freeman
Stephen & Joyce Cooper
Janie Linn
Mr. & Mrs. Richard Insley, Jr.
Bev & Walter Plachta
Terry & Frances Jindra
Richard Culver
Judy Foxwell
Samuel & Sara Walker
Priscilla Timken
Anne Ashe
Charlotte Langrall
Rick & Carol Bisker
Maxine Harden

Sue Olds
Calvin & Susan Peacock
Lill Largey
Circle Joanna-
c/o Carol Bisker
Sue Erskine
Pat Sterling
Opportunity Shop-
c/o Priscilla Bashart
Dayle Rounds
Bill & Shirley Cropper
Elodie Beale
Margaret Bounds
Ryan & Angela McLaughlin
Henry & Mary Louisa
Rutledge
Anna Kemble
Werner & Carolyn Gruber

Harry & Pat Cooper
Mark & Brenda Potts
Charlotte Langrall
Bill & Sylvia Mears
John & Robin Holloway
George & Barbara Whitehead
Bill & Jean Smith
Aaron & Marlene Pulhamus
Audrey Hayman
Mary Carey
Vernon Wilkins, Sr.
Mary Fulton
Jim & Bette Taylor, Jr.
William Nock
Bill & Patty Clendenen
Larry & Norma Olds
Rick & Carol Bisker
John Culver III
Louise Smith
Darryl & Leslie Nixon
Donald & Barbara Hopkins
Maxine Harden
Art & Billie Cooley
Frank & Frankie Shipper
Janie Linn
Asbury Child Development
Center Staff
Phyllis Phillips
Bill & Susan Perry, Jr.
France & Connie Smith
Robert & Emily Shade
Thomas & Barbara Thompson
David & Caryn Morris
Don & Lynn Cathcart
Jim & Nadine Jackson, Jr.
Charlie & Shirley Silvia
Bob & Barbara Kambarn

CHURCH ANNOUNCEMENTS

Senior Pastor: Rev. Benita Harris
Associate Pastor: Rev. Eric Warner
Visitation Pastor: Rev. Bill Sterling

Administrative Office Manager: Karen Corwin
Administrative Assistant: Sheri Burchard

Director of Music Ministries: Michael Stefanek
Director Children and Care Ministries:

Heather Harman
Director Finance and Building:
Janice Wilkinson
Maintenance: Complete Cleaning, Inc.

ACDC: Director: Casey Taylor
Asst. Director: Danna Abbott

Sunday, March 12



Asbury United Methodist Church
1401 Camden Avenue
Salisbury, Maryland 21801
Phone: 410-749-2131
Fax: 410-749-2914
Email: asbury@asburyweb.org
Website: www.asburyweb.org



the ASBURIAN

Return Service Requested

Non-Profit org.
U.S. Postage Paid
Salisbury, Maryland
Permit No. 29