

**HOLIDAY**  
*Hours*  
Page 13

Page 6

**ANGEL TREE**  
A Program of Prison Fellowship

**Salvation Army  
Christmas Stocking**  
Page 6

**UWIF Annual  
Christmas Tea**  
Page 9

**ASBURY**  
UNITED METHODIST CHURCH

# the ASBURIAN

Newsletter of Asbury United Methodist Church  
VOLUME 101 · ISSUE 50 · DEC 2023 - January 2024

**Merry Christmas**

**2024**

**HAPPY NEW YEAR!**

**INSIDE THIS ISSUE**

<b>WORSHIP</b>	
<i>Pastor's Column</i>	2
<i>Music</i>	3
<b>FINANCE</b>	4-5
<b>EXPLORE</b>	
<i>Youth</i>	5-6
<i>Asbury News</i>	13-14
<i>Adult Spiritual Formation &amp; Membership</i>	10-11
<b>SERVE</b>	
<i>UWIF News</i>	12
<i>Altar Guild</i>	11
<b>ACDC</b>	9
<b>CHURCH ANNOUNCEMENTS</b>	15



**OFFICERS OF OUR CHURCH**

- Dave Harris**, *Leadership Team Chair*
- Ray Thompson**, *Leadership Team Vice-Chair*
- Sharon Dashiell**, *Staff-Parish Relations Chair*
- TBD**, *Staff-Parish Relations Vice-Chair*
- Pawel Szczurko**, *Board of Trustees Chair*
- TBD**, *Board of Trustees Vice-Chair*
- Dan Ervin**, *Finance Committee Chair*
- Steve Hearne**, *Finance Committee Vice-Chair*
- Sharon Dashiell**, *ACDC Board Chair*
- Kim Bradshaw**, *Lay Leader*
- Sara Lewis and Amy Cropper**, *UWIF Co-Presidents*
- Carlton Bradshaw**, *Chair, BOD, ASP*

Editor: *Lydia Childs*

*From the desk of*  
**PASTOR TOM PASMORE**



**The Grinch hated Christmas, the whole Christmas season. Now, please, don't ask why. No one quite knows the reason. It could be perhaps that his shoes were too tight. It could be his head wasn't screwed on just right. But I think that the most likely reason of all...may have been that his heart was two sizes too small.**

*How the Grinch Stole Christmas* by Dr. Suess

As we prepare to celebrate Christmas and launch into a New Year, I reflected on the craziness of the world around us, and it took me back to my days in seminary. At the end of one of my fall semesters, I had an interesting conversation with a friend of mine who was also a student in my class. She was a single parent with two wonderful kids, but her live-in baby sitter, who had really been like a second mom to the kids, was graduating from Drew and leaving to take another job. As I listened my heart went out to her. She was carrying the weight of providing for her family, working a much needed full-time job, and finishing seminary without anyone who could help ease the burden. The juggling act that she had been barely managing has ended with all the plates crashing down around her. So, God, how can someone who is just trying to find their way to serve you be left in such a mess? Is your eye really on this sparrow? It left me feeling very low, even though I know that many people are going through things that are much worse.

Then in Chapel the very next week, God decided to say something directly to me. The woman who was preaching that day was once a part of a question and answer period with a mother whose daughter had been killed in the Columbine High School shooting. At one point someone asked the question that everyone wanted to hear the answer to: "How do you go on?" This grieving mother answered by saying that at first it was impossible and then as time went on it continued to be unbearable. She talked about praying for God to make her heart smaller so that the loss wouldn't hurt so badly. Then one day she felt God speak to her and give her an answer to her prayer. The problem with her pain wasn't that her heart was too big but that instead it was too small. She realized that her heart needed to grow significantly to help bring compassion to a world that sometimes just doesn't make any sense. That day marked a turning point for her. It's in the growing of our hearts that we find the Kingdom of God, and can in turn share this discovery with a world that seems to be imploding. Currently, I am trying my best to put this principle into action. I admit it is difficult, but I know that with God's help all things are possible, even growing a heart that is a few sizes too small . . .

Merry Christmas, Happy New Year, and Blessed Epiphany,

*Pastor Tom*

*Merry Christmas!  
Happy New Year!*



## MUSIC MINISTRY

Dr. Michael Stefanek, *Director of Music Ministries*



*In this season of Advent we have wonderful music events taking place!*

### **Saturday, December 2 at 4:00 PM**

• The Capitol Ringers based in Delaware, under the direction of Kevin Chamberlain, will be performing a holiday concert featuring handbells at Asbury in the Sanctuary. Admission is Free. There will be a Free-Will offering taken.

### **Sunday, December 10 at 7:00 PM**

• Annual Lessons & Carols by Candlelight Service. Music will be led by choir, organ, and woodwinds.

Asbury United Methodist Church will celebrate the Christmas holiday with three services on Christmas Eve at 10:00 am, 4:00 pm and 9:30 pm, all with distinctly different styles:

- **10:00 am** - A contemporary Christmas worship experience with music provided by the Praise Band from our very own Come As You Are (CAYR) service. A relaxed, yet meaningful way to celebrate Christ's birth.
- **4:00 pm** - Filled with the sounds and sights of the season, this service will be a family focused worship experience with kids choirs and bells, Revel Vocal Ensemble focused. Traditional hymns will be sung and accompanied by organ and piano.
- **9:30 pm** - A stirring, traditional Christmas worship experience with organ and choir filled with hymns, carols and special music.



All services will include a celebration of Holy Communion and singing with candle light. Children are welcome to come in their pajamas! For younger children, there will be glow sticks available instead of candles. Nursery will closed on December 24 so our nursery staff can enjoy the worship services with their families.

### **New Year Eve Worship Services**

- Start the new year off well! You are invited to come to church on December 31 for an Epiphany Worship experience at our 8:45 and 11:00 a.m. Praying God's blessings on 2024!

*You crown the year with your bounty, and your carts overflow with abundance. Psalm 65:11*

Wishing all a Happy, Safe, and Joyous Holiday Season!  
Merry Christmas and Happy New Year!

**Dr. Michael Stefanek**  
*Director of Music Ministries*



## FINANCE

*Janice Ilczuk, Director of Finance & Building*

- Finance statement for actual income and expenses representing January- October reports a deficit of \$1,706. We had budgeted through October to end with a deficit of \$34,912. We were able to reduce that deficit due to your generous contributions of \$30,120 with the Close the Gap Campaign.
- We pray all 2023 pledge commitments will be fulfilled and we close the year with a positive bottom line number.
- Christmas Offering-we have budgeted to receive \$5,000 through our special Christmas offering. You will find these special envelopes in the pews (Sanctuary) and chairs (Fellowship Hall) during the month of December. At this wonderful time of the year, when we see the generosity of our Lord, we ask that each of our church members and attendees consider giving generously to the Christmas offering. Last year's offering received was \$7,453- what a blessing! Let's see if we can match or exceed that number.

- 2024 Operating Budget- even though we have not finished 2023 yet, the Finance Committee is working faithfully on the operating budget for next year. You can help us create a realistic budget by returning a pledge card to let us know of your giving intentions for 2024. Each pledge makes a difference and gets us closer to closing the income and expense gap.

Income & Expense Comparison	January - October Actual	January - October Budget	Annual Budget
Pledge/Unpledged Contributions	\$532,991	\$550,000	\$655,000
Plate Contributions	\$35,121	\$16,500	\$25,000
Special Contributions	\$5,392	\$5,300	\$12,800
Endowment	\$27,705	\$27,705	\$27,705
Rentals	\$38,708	\$29,875	\$32,825
Interest-checking/mma/cd	\$10,196	\$6,678	\$14,040
Gain/loss on stock	(\$55)	(\$250)	(\$500)
Operating Reserve	\$0	\$0	\$39,630
Total Income	\$650,057	\$635,808	\$806,500
Property Expenses	\$86,162	\$91,932	\$111,522
Ministry Expenses	\$252,918	\$262,100	\$316,473
Administrative Expenses	\$116,454	\$118,571	\$142,038
Apportionments	\$82,072	\$82,072	\$97,272
Employee Benefits	\$114,157	\$116,045	\$139,195
Total Expenses	\$651,763	\$670,720	\$806,500
Net	(\$1,706)	(\$34,912)	\$0

- Give by Electronic Funds Transfer (EFT) – Simply complete an EFT Authorization Form and return to the Finance Office. We will set the transfer up for you. Options for transfers are weekly, 1st or 15th of each month. There are no fees involved in giving by EFT. Contact Janice at the church office - 410-749-2131, ext. 105 or at [janice@asburyweb.org](mailto:janice@asburyweb.org) to set this up through Asbury. You can also contact your bank to set up a transfer to the church.

**2 Corinthians 9:7 (NIV)** *each of you should give what you have decided in your heart to give, not reluctantly or under compulsion, for God loves a cheerful giver.*

We praise God for the generosity of each and every one. We look back in thanksgiving over the past, and know that the same God who has met our prior needs will meet us again.

**Janice Ilczuk**  
*Director of Finance & Building*



## BOARD OF TRUSTEES

*Pawel Szczurko, Chair*

Hello Fellow Asburians,

Time passes quickly. It seems like we were just starting 2023 and planning projects for this year.

Year by year we are striving to improve our church and renovate it as our budget allows. This year, we were able to complete the following projects, some of them visible and some of them “behind the scenes”:

- The Administrative Hallways have been renovated. The old floor and ceiling tiles were removed, new floor tiles and new ceiling installed (with much needed new lights). We will be doing some painting touch ups in these hallways as well.
- We continue to renovate the Asbury Child Development Center wing. With great help from ACDC, 2 additional classrooms were renovated. The old floor and ceiling tiles were removed, walls were painted, and new floor tiles and new ceiling installed (with much needed new lights).
- New window shades installed in Fellowship Hall
- New headsets for worship in the Sanctuary
- New server purchased
- Several offices and classrooms were painted
- Carport area power washed
- Replaced several panes in the large balcony window
- Several organ repairs were made
- We continue to work with Legendary Landscape to keep our church grounds manicured
- Replaced some aging plumbing issues
- Worked on an Eagle Scout project to replace and add picnic tables around the church
- In depth steeple inspection
- The Sanctuary HVAC pump was replaced to keep our church properly heated. Along with this, the system was drained and new valves installed to replace old ones.
- A new air compressor and air dryer were replaced in the basement
- With our Church & Society Ministry, we removed the mulch from the remaining 2 islands at the south parking lot and wait for pollinator friendly native plants to be planted
- We worked with the county to install parking delineators at entrances/exits to help with vision issues.
- Fellowship Hall light fixtures are currently being replaced
- Other miscellaneous improvements were performed to meet insurance requirements.

A huge thank you to the members of the Trustees Committee for their faithful work and care of our building and grounds.

**Pawel Szczurko**

*Board of Trustees Chair*



## STAFF SPOTLIGHT - HEATHER HARMAN

Hello, Asbury friends! I am Heather Harman and I serve as the Director of Children and Care Ministries. I was born and raised in beautiful Northeast Pennsylvania and I am a proud alumni of Penn State where I earned a BS in Education and also met my husband, Jeff.

Jeff and I have two adult children, Megan and Joshua. Megan and her husband Serge are both physicians in residencies in Michigan. They welcomed a baby boy, Jackson Nikolas, on September 15<sup>th</sup>, making us grandparents! Jeff and I are greatly enjoying our new roles as 'Nana and Pops'. Josh graduated from the University of Maryland in May and works for the FAA as a Contract Weather Observer.

We found our way to Salisbury when Jeff was transferred in 2004. I had been working in Dover, DE as a preschool teacher and director's assistant. I asked Jeff to find out where Josh could go to preschool when we moved and everyone said Asbury Child Development Center was the best! I planned to visit just to get Josh enrolled, but lo and behold, they also had a teaching position available. I began my Asbury journey as a teacher at ACDC, teaching 3's and 4's for a few years before making the transition to being the Music teacher for all classes. After 9 years with ACDC, I accepted my current position at the church in July of 2013.

On a personal note, I have been a lover of singing my entire life. I'm a graduate of the Choristers Guild Institute, which is a certification program for the directors of children's choirs. This year I was honored to be asked to write children's choir devotionals for 'The Chorister', the official publication of the Choristers Guild. Outside of my job, I'm a huge Disney fanatic, and I have a houseful of very spoiled pets!



## SALVATION ARMY CHRISTMAS STOCKINGS



Salvation Army stockings and toppers are available today at both Welcome Centers, so please stop by and get one (or several) to fill so a needy child can have Christmas. The stockings can be filled for an infant to a 12 year old child. After filling the stocking, attach the topper and mark it with boy or girl and the age. You can place your filled stocking in the big Christmas box by the Welcome Center in Fellowship Hall or the Christmas box in the hall across from the office. Please turn in your filled stockings by Sunday, December 10th. *Thank You for helping children in need!!!*

1. Take a stocking (or several!) and a cardboard topper.
2. Fill the stockings with fun and useful things for children 0-12 years old.
3. Attach the topper, mark it with "boy" or "girl" and the age range (for example, "Girl 2-3", "Boy 11-12", etc.)
4. Place filled stockings in the marked Christmas boxes by either of the Welcome Centers, or in the hall across from the main office.
5. Please turn in your stockings by **Thursday, December 10th.**

***Thank you for helping children in need!***

## ADOPT A POINSETTIA!

Believe it or not, it's that time again! Silk poinsettias will be placed in the church to decorate for the Christmas season. You can adopt a poinsettia in memory or honor of a loved one for \$5.00 each and have them recognized in the worship bulletin. All monies collected are used by the Altar Guild for ongoing altar maintenance expenses throughout the year. Find an order form in one of the Welcome Centers, or in the front office. All orders must be received by Friday, December 8th .

## ANGEL TREE



*A Program of Prison Fellowship*

The Angel Tree Prison Fellowship Program provides children of incarcerated parents with Christmas gifts, and provides the parents with a means of staying in contact with the children. Angel Trees will be set up in the Narthex and in Fellowship Hall on Sunday, December 3. Register with a volunteer, pick out an Angel tag, and go shopping! We have 43 children this year, and each child gets two different Angel tags, a “toy” gift and a “clothing” gift. We also have Angel tags to provide each family with a grocery card for their holiday dinner. Each Angel gift should be \$25-30, but no more than \$30.

***All gifts and tags must be returned, unwrapped, to the church no later than December 10<sup>th</sup>.***

Don't want to go shopping, but still want to participate? Bring in your Angel tag and a check made payable to Asbury with “Angel Tree donation” in the memo line - we'll do the shopping for you!

*If you have any questions, please call Sheri at the church office.*

## HANDS AND HEARTS ENDING HOMELESS (HHEH)



**Hands and Hearts Ending Homelessness (HHEH)** is a 501c3 non-profit emergency shelter formerly known as the Community Emergency Shelter Program (CESP). Currently, HHEH offers emergency cold-weather housing and supportive services to homeless men during an approximate five-month term each year. During their stay, each client receives support to set goals and overcome obstacles that may prevent them from improving their economic sustainability. HHEH partners with organizations including HOPE, ACT, the City of Salisbury, TidalHealth and many others. Through these partnerships, HHEH can assist clients in obtaining birth certificates, social security cards, photo identification and mental health treatment.

Asbury has participated in homeless care for almost two decades. This season, Asbury will be covering January 20 – February 2, 2024 for meals and volunteers. Some important points:

- Shelter Location – 31525 John Deere Drive, Salisbury, MD 21804. The building is located behind the Seventh Day Adventist Church.
- Asbury will supply food for breakfast, lunch and dinner for the two-week period.
- We need two volunteers for each shift to work the registration: 4:45 – 8:00 pm and 7:45 – 11:00 pm.
- Click on <https://www.signupgenius.com/go/10C0F49ACAE2DA6F4C43-check2#/> and scroll down to the date/time you would like to volunteer. (disregard the green “Start”... these are ads).
- Anyone is welcome to volunteer for registration, meals or donations outside of the Asbury time frame by going to the website: <https://www.handsandheartsshelter.org>.

### **Asbury Contacts:**

- General Information – Sharon Dashiell [sharondashiell@comcast.net](mailto:sharondashiell@comcast.net)
- Meal Sign-ups – Shelly Marshall [shellymarshall413@gmail.com](mailto:shellymarshall413@gmail.com)
- Registration Volunteers – Calvin Peacock [calvinpeacock@gmail.com](mailto:calvinpeacock@gmail.com)  
& Henry Rutledge [hamptonhunter1066@hotmail.com](mailto:hamptonhunter1066@hotmail.com)

Thank you for your kind attention, and we look forward to sharing your participation with the homeless men.

***Proverbs 22:9 “The generous will themselves be blessed, for they will share their food with the poor.”***

## YOUTH MINISTRY

Brooke Christensen, *Director of Youth & Family Ministries*

Check your Youth Update emails for the most up to date information.



- **Youth Group** will be **Friday, December 1** at Asbury's Fellowship Hall 6:00-8:00 pm
- **A Chili Night for Caroling** is an intergenerational event on Sunday, December 3 starting at 4:30 pm
- **Confirmation** begins January 28th for students in 8th grade and up
- **Book Club** is reading The Inexplicable Logic of My Life this session and we are choosing a date to meet at the end of January/beginning of February
- The Youth Group will prepare the meal for Hands and Heart Ending Homelessness on **Sunday, January 21**
- **The Souper Bowl of Caring** also takes place in January/February





### Thanksgiving Pie Fundraiser

Thank you to everyone who supported the Middle School Mission Trip by buying a pie! We exceeded our goal of selling 120 pies and all together sold 135. We are on track! Keep a look out for the next tasty fundraiser we have planned, a soup sale!

### Sunday School Teachers Needed!

Our Youth program is in need of a couple more **Sunday School teachers**. Second adults would also be great but we really need a couple adults who are interested in teaching. We have a great curriculum with all sorts of ideas and resources and I am always here to help so you would not be out on your own. Please search your hearts and let [brooke@asburyweb.org](mailto:brooke@asburyweb.org) know if you can help.

## **PUPPETS FOR CHRIST - SPAGHETTI DINNER**

*Amy Cropper, Director*

Please come out to support Puppets for Christ's annual Spaghetti Dinner Fundraiser on Friday, January 19<sup>th</sup>. This year's show will be entitled "Just in Time". Entertainment will begin at 6:00pm with dinner following. Ticket sales will begin on Sunday, January 7<sup>th</sup> and 14<sup>th</sup> at each service, which gives you only 2 Sundays to buy your tickets in person. Online ticket sales will begin on December 10<sup>th</sup> via email at [puppetboss@comcast.net](mailto:puppetboss@comcast.net) or Puppets for Christ Facebook page. The deadline to purchase tickets will be Sunday, January 14<sup>th</sup>! Ticket prices are \$10/adult, \$5/children (4-12) and children 3 and under are FREE. Reservations for parties of 6 or more can be made when you purchase your tickets. **Tickets will not be sold after this date. There will be NO sales at the door!**



*Come join us for a night filled with wonderful entertainment and delicious spaghetti? We hope to see you there!*



## **ASBURY CHILD DEVELOPMENT CENTER**

*Casey Taylor, Director of ACDC*

December passes in a blur of excitement around Asbury Child Development Center with a lot of activities and events planned. On December 19<sup>th</sup> and 20<sup>th</sup> all the students participate in the annual ACDC Christmas Program @ 11:15 am in the church Sanctuary. Parents attend and leave in the true spirit of the season.

We are excited to announce that the new date for our playground dedication will be on May 5<sup>th</sup> from 12-2. We will pray for better weather this time, but if not the rain date will be May 19<sup>th</sup> from 12 noon -2 pm.

ACDC is starting to plan for next school year's registration, which will take place for current students and their siblings on Wednesday, February 14<sup>th</sup>. AUMC Church members may register the week before Priority Registration (Feb. 5 - Feb. 9<sup>th</sup>). Open registration will take place on March 13<sup>th</sup>. Registration information will be available for pick up mid-January. Please call 410-742-7058 to schedule a tour. If you have additional questions do not hesitate to contact anyone in the office.

Our school hopes that you all have a wonderful holiday season and enjoy time with your families and friends. We feel blessed to be a small part of AUMC and wish all of you a Merry Christmas and Happy New Year!



**ADULT SPIRITUAL FORMATION AND MEMBERSHIP**  
Rev. Kristen Wall-Love, *Director of Spiritual Formation and Membership*

The spiritual practice for December is "The Examen Prayer"

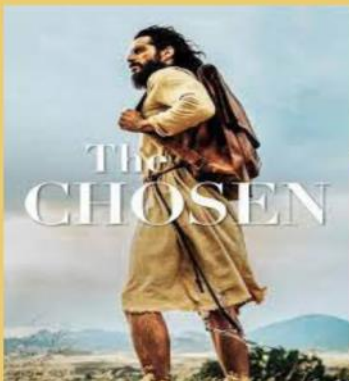
EACH WEEK OF ADVENT,  
TAKE TIME BEFORE BED  
TO PONDER  
WHERE YOU NOTICED:  
WEEK 1: HOPE  
WEEK 2: LOVE  
WEEK 3: JOY  
WEEK 4: PEACE

**JOURNEY THROUGH THE  
PSALMS**

**7pm Monday nights in 2024  
in person or on zoom  
Can chat with group or self-led  
~ 70 verses a week  
RSVP [kristen@asburyweb.org](mailto:kristen@asburyweb.org)**

**Beginning January 7**

**Freestyle Adult Sunday School**



**IN THE LIBRARY, 10:00 AM**

We will begin by discussing the first season of "The Chosen," a popular creative series based on the gospel texts.

All are welcome.

The first 5 folks to RSVP will get a 40 day Chosen devotional!

[kristen@asbruryweb.org](mailto:kristen@asbruryweb.org)

**NEW MEMBERS**  
Adam & Brittany Spear



**TO OUR NEWEST MEMBERS!**

Adam and Brittany Spear are happy to become new members of Asbury Methodist Church. They are Salisbury locals and have two children Ryan (3) and Jeremy (15). They have been enjoying their time worshipping at Asbury and are happy to continue doing so!

**Altar Guild**



Brenda Martin, *Chair*  
All Members



Sharon Dashiell, *Chair*  
Marilyn Batie  
Carolyn Connors  
Kathy McIntyre



*holly jolly*  
**MIX-UP**

Unscramble the holiday words... most right wins!

1. PULRDOH \_\_\_\_\_
2. MHCISTARS \_\_\_\_\_
3. GSTKCNOIS \_\_\_\_\_
4. UHANKHA \_\_\_\_\_
5. ERTE GISHTL \_\_\_\_\_
6. KBLCA DFYRIA \_\_\_\_\_
7. PGNIWRPA RPEAP \_\_\_\_\_
8. ECOIKSO \_\_\_\_\_
9. YLOHDIA YPRTA \_\_\_\_\_
10. ANSTA UALCS \_\_\_\_\_
11. EGSLIH IDRES \_\_\_\_\_
12. WNMSOAN \_\_\_\_\_
13. EISMOETLT \_\_\_\_\_
14. EYDEIULT GLO \_\_\_\_\_
15. YCNAD EANC \_\_\_\_\_
16. AROSDET TSNCHTSUE \_\_\_\_\_

*Name* \_\_\_\_\_ *#Right* \_\_\_\_\_

## UWIF Women of the Year Nominations Need-



Be thinking of that special woman to nominate for the *UWIF Woman of the Year* award coming up in December! Candidates need to be a UWIF member who has generously given of herself this year in the areas of UWIF, Asbury church, family and/or the community. You do not need to be a member of UWIF to nominate someone. Please provide a letter in the beautifully decorated box in the Welcome Center describing why your candidate is deserving of this honor. A list of current UWIF members and past recipients will be located next to the box for your reference. The deadline to turn in letters will be Sunday, December 3<sup>rd</sup>, and the award will be given at the UWIF Christmas Tea on Sunday, December 17<sup>th</sup>. *We look forward to receiving many nominations!*

## UWIF Annual Christmas Tea



Our annual Christmas Tea is Sunday, December 17<sup>th</sup> from 3:00 to 5:00 PM. **ALL Asbury women are invited to attend.** It will begin in the Sanctuary with a musical performance by the Salisbury Children's Choir under the direction of Alice Wigfield. Light refreshments will follow in the Fellowship Hall. Our program will be honoring those UWIF members that have passed this year, introducing our new members, installing our officers for 2024 year, and a special recognition of our Women of the Year. (Nominations for Women of the Year are currently being accepted.)

We also will be collecting hygiene products for Bennett High School, our Faith based partner.

*Please join us for a festive afternoon of fun and fellowship! RSVP to Connie Boccia -410-603-0253 by 12/3/23*

## ADULT BIBLE STUDY

### BIBLE 101

The Bible 101 class is studying "AN UNLIKELY ADVENT" by Rachel Billups. We will see the birth of the Christ Child through the eyes of Elizabeth, Zechariah, the Magi, and the Shepherds. Come and join us for this most meaningful study that will warm your heart! We are also looking forward to our new winter study of the First Book of Corinthians that was written by Apostle PAUL.

*All Asburians and visitors are invited to our class to learn more about the Holy Bible!*

### OPEN HEARTS, OPEN MINDS



Date	Topic
12/3	Heaven and Earth: Advent and the Incarnation, <b>Surprised</b>
12/10	Heaven and Earth: Advent and the Incarnation, <b>Light</b>
12/17	Heaven and Earth: Advent and the Incarnation, <b>Rejoice</b>



**December/January Happenings**

- We will be joining in with the **Chili Night for Caroling** on December 3
- Our last Sunday gathering/Bible Study until February will be December 10 for **Pancake Breakfast**

--Brooke



**ASBURY NEWS**

**Church Office Closed December 25 - January 1**

The Church office will be closed on December 25 - January 1. The church office will reopen Tuesday, January 2 at 8:30am.

**Chair Yoga**

You are invited to attend some gentle/chair yoga, **now every MONDAY at noon in the Mackey Room**. Plan on 30-45 minutes, beginning with a devotion.

**Opportunity Shop Holiday Information**

The shop will be closed for the Christmas season beginning December 18, and will reopen on January 8, 2024. If you want to make a donation when the shop is closed, please call the church for an appointment.

We will be open for the holidays as follows:

***Mondays*** - December 4 and December 11, open 8:30am-12:00pm for donations

***Thursdays*** - December 7, December 14, open 10:00am-1:00pm for sales and donations

***Looking for ways to help?*** We need volunteers to work as cashiers on Thursdays, and if you are cleaning out your closets, we need household items and clothing! All items need to be clean and functional. Tax receipts available.

*The shop is currently in need of fall and winter clothes, shoes, holiday and any kitchen or houseware items. Must be clean, functional and current. Tax receipts are available. Thank you for supporting this important ministry!*

## ASBURY NEWS

### **Salisbury Urban Ministries**

#### **Spare Change – Change a Life**

Help change a life with your spare change. Now through the end of December, please consider donating your spare change to Salisbury Urban Ministries. You will find large change jars in the Welcome Centers.

Your spare change can provide hot meals for children in the Kid's Café; provide warm coats and snack bags for homeless men; assist individuals to meet their prescription co-pays and better manage their chronic conditions; provide food bags to those in need in our community. *A little spare change from each of us can go a long way!*

#### **Salisbury Urban Ministries Donation requests for December:**

During these uncertain times, more people need help, but there is less support available to meet their needs. Please consider making your annual donation now to help give local individuals and families an opportunity to make their lives more secure. Did you know...

- A \$25 donation to our Lazarus Food Pantry will provide a family with a bag of nutritious food items.
- A \$250 donation to our Kids Cafe program will provide clothing, school supplies, meals, field trips and tutoring for a child enrolled in our program.
- A \$100 donation to our Men's Welcome Center will provide a homeless man with food, hygiene items, a coat, undergarments and boots.

To support our programs, please make your check payable to Salisbury Urban Ministries and mail to: PO Box 1792, Salisbury, MD 21802

For questions on any of our programs, please contact Salisbury Urban Ministries at 410-749-1563 or [sbyurbanministries@gmail.com](mailto:sbyurbanministries@gmail.com)

#### **Salisbury Urban Ministries Donation requests for January 2024:**

##### **LAZARUS FOOD PANTRY:**

- Hamburger/chicken/tuna helper
- Bars of soap
- Single pack tissues

##### **KIDS CAFÉ:**

- Individually packed snacks

##### **MEN'S WELCOME CENTER:**

- Breakfast bars

Donations can be dropped off at  
**Salisbury Urban Ministries Office**  
326 Barclay St  
Or call 410-749-1563

**\*\*\*SUM office will be closed for the Christmas holiday from December 18, 2023 through January 2, 2024.**

**\*\*\*Please note that with the winter weather coming, if Wicomico County Schools are closed, Salisbury Urban Ministries will be closed as well.**



## CHURCH ANNOUNCEMENTS

### MEMORIALS

Joann Smith  
Carolyn Gruber

Todd Hershey  
Ruth Iscar

Sue Hager  
Rick & Carol Bisker  
Ethel Jine Pettit  
Ruth Isear

### MEMORIALS

John Radford Coffman  
James Coffman

NEW MEMBERS  
Adam & Brittany Spear, 11/26/2023

### DEATHS

Virginia Jones, 10/12/2023  
Joann Smith, 10/23/2023

### BAPTISMS

William Edward Perry, 10/29/2023  
Alice Lorraine Libby, 11/5/2023



### MEETINGS SCHEDULE

Date	Day	Time	Meeting
7	Thu	5:30 p.m.	Finance Committee
12	Tue	5:30 p.m.	Board of Trustees
13	Wed	7:00 p.m.	Leadership Team



### MEETINGS SCHEDULE

Date	Day	Time	Meeting
3	Wed	6:00 p.m.	SPRC
9	Tue	5:30 p.m.	Board of Trustees
10	Wed	7:00 p.m.	Leadership Team
11	Thu	5:30 p.m.	Finance Committee
24	Wed	6:00 p.m.	UWIF
30	Tue	10:00 a.m.	Altar Guild



Wishing you and your family  
the *Gift of Faith*,  
the *Blessing of Hope*  
and the *Peace of His Love*  
at Christmas and always.



Have a Blessed  
Christmas and New Year!

Asbury Church Staff



\*\*\*Are you receiving a printed Asburian but would rather see it in color, on our website? Or would you rather not receive it? Please let us know.\*\*\*

**Senior Pastor:** *Rev. Dr. Tom Pasmore*  
**Administrative Office Manager:** *Lydia Childs*  
**Administrative Assistant:** *Sheri Burchard*  
**Director of Music Ministries:** *Michael Stefaneck*  
**Director of Children and Care Ministries:**  
*Heather Harman*  
**Director of Finance and Building:** *Janice Ilczuk*  
**Director of Adult Spiritual Formation and**  
**Membership:** *Rev. Kristen Wall-Love*  
**Director of Youth & Family Ministries:**  
*Brooke Christensen*  
**Maintenance Worker:** *Bob Love*  
**ACDC Director:** *Casey Taylor*  
**ACDC Asst. Director:** *Danna Abbott*



**Asbury United Methodist Church**  
 1401 Camden Avenue  
 Salisbury, Maryland 21801  
**Phone:** 410-749-2131  
**Fax:** 410-749-2914  
**Email:** [asbury@asburyweb.org](mailto:asbury@asburyweb.org)  
**Website:** [www.asburyweb.org](http://www.asburyweb.org)



**the ASBURIAN**

Return Service Requested

Non-Profit org.  
 U.S. Postage Paid  
 Salisbury, Maryland  
 Permit No. 29