



the ASBURIAN

Newsletter of Asbury United Methodist Church
VOLUME 103 · ISSUE 52 · MARCH 2024



INSIDE THIS ISSUE

WORSHIP	
<i>Pastor's Column</i>	2
FINANCE	4
EXPLORE	
<i>Children</i>	6
<i>Youth</i>	5
<i>Asbury News</i>	14
<i>Adult Spiritual Formation & Membership</i>	10-11
SERVE	
<i>UWIF News</i>	12
<i>Altar Guild</i>	9
ACDC	8
ASP	8
CHURCH ANNOUNCEMENTS	15

OFFICERS OF OUR CHURCH

Dave Harris, *Leadership Team Chair*
TBD, *Leadership Team Vice-Chair*
Sharon Dashiell, *Staff-Parish Relations Chair*
TBD, *Staff-Parish Relations Vice-Chair*
Pawel Szczurko, *Board of Trustees Chair*
Hugh Livingston, *Board of Trustees Vice-Chair*
Steve Hearne, *Finance Committee Chair*
Steve Fulkrod, *Finance Committee Vice-Chair*
Ellen Smith, *ACDC Board Chair*
George Whitehead, *Lay Leader*
Star Weaver, *UWIF President*
Lori Conaway, *UWIF Vice-President*
Dale Cropper, *ASP BOD*

Editor: *Lydia Childs*

From the desk of

PASTOR TOM PASMORE

I am excited about an opportunity that we have here at Asbury to join in a new ministry partnership here in Wicomico County. We have the opportunity in 2024 to change the way that our churches share the Gospel through word and deed in Wicomico County. We are on the forefront of new and emerging ways to engage in the mission of Jesus Christ in our own backyard. Our United Methodist churches have a rich history of serving our local communities through various ministries and outreach programs. However, in today's rapidly changing world, we believe that by working together, we can achieve even more significant results and have a more profound impact than if we continue as things are. This cooperative effort aims to bring about community transformation while respecting the autonomy and traditions of each individual church and congregation.

The cities of Fruitland and Salisbury are loved by God and we can help bring Christ to them as they seek to prosper, and as we seek to grow as the Body of Christ. The primary objectives of creating a Cooperative Ministry is to further the mission of our churches by making disciples of Jesus Christ for the transformation of the world. We see a deep connection between Asbury, Bethesda, St. John's, and Union, and we would like to grow that connection into vibrant, successful ministry that impacts hearts and lives. This is a new and exciting opportunity to try something that is mostly untested here in Wicomico County. To do this we must go inward, move outward, and do it together:

INWARD

Spiritual Formation: Each of our congregations is already focused on spiritual formation through, Bible studies, Sunday School, devotional opportunities, and on-going spiritual growth opportunities. These traditions are strong and important. But what if we coordinated our offerings to reach all of the congregants in all of these congregations? What if everyone could have access to multiple Sunday School classes, Disciple Bible Study, a dedicated Director of Spiritual Formation, retreat opportunities, joint confirmation, and other opportunities that haven't been thought of yet? We could reach a whole new generation with a deeper understanding and appreciation for Scripture and God's call on their lives.

OUTWARD

Community Transformation: Each of our congregations is already working toward community transformation through various outreach ministries, including Salisbury Urban Ministries. What if we combined resources, both financial and human, to direct them at the greatest needs in our area? How could we shift the outcomes of people and programs? This is the call of the Gospel—to reach out in love and concern to our community. Together we can have a much more significant impact than if we continue on individually.

TOGETHER

Strength in Joint Community: We are already collaborating on Youth ministries, ASP mission trips, Salisbury Urban Ministries, Vacation Bible School, and joint worship for certain holidays. How much more could we accomplish if we deepen our connections? What opportunities could we create by leveraging the individual giftedness of our laity in joint God-inspired ministries? A Spirit-infused community moving forward could do dramatic and amazing things. God is calling us to step out in faith to build a community that we are proud to call home. While this partnership will create opportunities for brand new ministries, there are also things that will remain the same moving forward.

Preservation of Congregational Identity: To be clear, this is not a merger. This is an opportunity to leverage the strengths and gifts of each congregation to make an impact in the community. Each congregation will retain its unique identity, worship routines, traditions, and pastoral leadership. These will not change in the formation of Wicomico Cooperative Ministries. Congregants will still have the opportunity to worship in the familiar setting of their own church while participating in expanded joint ministries.

Independent Governance, Finances, and Property: Each church would continue to maintain its current governance structures. Each congregation would be responsible for their own property and their own financial decisions. The cooperative ministry would primarily be focused on expanding existing collaboration and creating innovative and exciting ministries.

The Cooperative Ministry effort will be coordinated by a joint vision team consisting of representatives from each participating church. This team will be responsible for alignment of community ministries, seeking resources for joint ministry ventures, and vetting new ministry opportunities. The team would focus on vision and strategy and leave the administration to the leadership teams of the local churches.

If we are going to innovate we need everyone's ideas and creativity. We can harness the insight of multiple churches to meet the contextual challenges of ministry on the Lower Eastern Shore, and we will need each other to move forward together.

We are inviting you to consider the opportunities to impact our community through this cooperative ministry approach.

Blessings and Peace to you all,

Pastor Tom

From the Leadership Team: *Message from the Asbury Leadership Team*

Your Asbury Leadership Team convened this Wednesday to celebrate ministries and discuss on-going church initiatives. Thanks to the projection of positive income and the outstanding efforts of our Finance Team, we voted unanimously to approve a balanced budget that DID NOT access funds from account reserves.

During the open session the team heard from church members in support of youth, traditional, and contemporary music ministries. The Staff Parish Relations Committee, Finance Team, and Leadership Team have worked collaboratively through debate and discussion to find a solution to the leadership needs of our music ministries. In truth, this discussion began prior to the announced departure of Michael as members attending the contemporary service have advocated for additional music leadership for quite some time.

The following themes permeate on-going discussion. We must responsibly recognize our financial reality and potential. We must acknowledge that of the three Sunday morning services, the contemporary service maintains the highest average weekly attendance. Yet, we also support the traditional service complimented by the splendor of the Casavant organ played by an equally talented musician is a vital part of our Sunday morning worship and community identity. Your Leadership Team, Staff Parish Relations Committee, and Finance Team will continue to explore part-time and possibly full-time staff options. This process will take patience from the congregation. However, feedback is always encouraged as your church leadership transparently works to meet the needs of our meaningful music ministries.

Finally, Pastor Pasmore presented a proposal to the Leadership Team to formally enter Asbury into cooperative ministry with other local United Methodist congregations. This clergy led initiative has the advantage of unifying staff, volunteers, and available resources to expand local ministry. The Leadership Team encouraged clergy to organize over the next few months a series of presentation and discussion opportunities for church attendees to learn and offer feedback regarding this initiative. The first opportunity for attendees to hear more about the cooperative ministry occurred last Sunday as part of the Lunch and Learn series following the 11 AM traditional service. Your Leadership Team is working with clergy to organize a full general church meeting late this Spring before formalizing a commitment to this new endeavor.

Yours in Service,

Dave Harris, *Chair, Asbury UMC Leadership Team*

CHANGE IN OFFICE HOURS

New Church Office Hours

Effective Wednesday, May 1, 2024 the church office schedule will change to Monday thru Thursday 10:00 a.m. to 2:00 p.m. The office will only be staffed during this time. SPRC has approved this change to better meet the needs of the church and the staff. There is no change in the number of hours ministry staff are working.

If you wish to meet with staff outside of church office hours, just contact that staff person directly to set an appointment. Pastoral emergency contact information is available at all times via the phone answering system.

FINANCE



2024 Operating Budget Approved

As we begin a new year, we look on with anticipation and excitement! We look forward to new beginnings and to see how God will provide for our church. Our 2024 operating budget has recently been approved by our Finance and Leadership Committees. As you review the budget chart, you will see that this year's overall budget is just slightly less than what our 2023 actual income was, about a 1% reduction. Our income is estimated using current pledge commitments and other income based on our past history – with about 90% of our income coming from our congregation through your gifts. Our expenses are what we believe we need to spend on our ministry and operating costs. Our Finance Committee meets each month to review our financials and discuss any concerns. Please remember the operating budget is for day-to-day income/expenses. We are blessed with a Trustee Committee that monitors a separate budget that supports the church building and grounds, including most maintenance, repairs, painting, improvements, etc. We thank you for your continued financial support of our ministries and operating costs, and yes, we are still accepting pledges, gifts, and special contributions for holidays, like Easter! We ask that you continue to pray for God to bless the work of Asbury, that He would provide financially, and that we would be good stewards of His gifts.

Janice Ilczuk

Director of Finance & Building

	2023 Budget	2023 Final	2024 Budget	2024 Budget vs 2023 Budget
Pledge Contributions	\$590,000	\$536,269	\$552,000	(\$38,000)
Unpledged Giving	\$65,000	\$90,039	\$80,000	\$15,000
Plate Contributions	\$25,000	\$45,350	\$45,000	\$20,000
Special Contributions	\$12,800	\$13,414	\$14,125	\$1,325
Endowment	\$27,705	\$27,705	\$24,200	(\$3,505)
Rentals	\$32,825	\$43,636	\$45,900	\$13,075
Interest-checking/mma/cd	\$14,040	\$18,131	\$11,025	(\$3,015)
Gain/loss on stock	(\$500)	(\$55)	(\$250)	\$250
Operating Reserve	\$39,630	\$4,213	\$0	(\$39,630)
Total Income	\$806,500	\$778,700	\$772,000	(\$34,500)
Property Expenses	\$111,522	\$102,941	\$112,378	\$856
Ministry Expenses	\$316,473	\$306,293	\$292,900	(\$23,573)
Administrative Expenses	\$142,038	\$139,370	\$136,168	(\$5,870)
Apportionments	\$97,272	\$97,272	\$102,879	\$5,607
Employee Benefits	\$139,195	\$132,824	\$127,675	(\$11,520)
Total Expenses	\$806,500	\$778,700	\$772,000	(\$34,500)
2023- Received \$31,521 through Close the Gap Campaign Aug- Dec.				
This collection reduced the amount needed to use from operating reserve.				

YOUTH MINISTRY

Brooke Christensen, *Director of Youth & Family Ministries*

IT'S TIME TO BRING
IN CANDY FOR THE

Easter Egg Hunt

WE WILL BE
STUFFING EGGS ON
MARCH 17

CANDY MUST BE
INDIVIDUALLY WRAPPED
AND ABLE TO FIT INTO
A REGULAR SIZED
PLASTIC EGG

Be **A** Greeter!



Are enthusiasm and organizing gifts of yours? We are looking for a person to coordinate the greeters for the Festive 11:00 worship service so that all may be warmly and intentionally welcomed. Contact kristen@asburyweb.org if you are interested.

CHILDREN'S MINISTRY

Heather Harman, *Director of Children and Care Ministries*

There's so much going on in Children's Sunday School! In February we ate pancakes, planted starter seeds for the pollinator garden, and learned about some WOW moments in Jesus' ministry. Sunday School is such an important piece of your child's faith development! Won't you come and join us?

- March 3: Regular Sunday School Day, 'WOW! Jesus has the power to provide!'
- March 10 : Family Pancake Day! Gather in Fellowship Hall to have breakfast and support the ASP team.
- March 17: Regular Sunday School Day, 'WOW! Jesus has the power to save!'
- March 24: Family Sunday School! Come together with your family for a special project (TBA)
- March 31: Easter Egg Hunt in the Garden!



Picture Above: *Kingdom Kids Singers at the 11:00 a.m. Festive Worship Service on February 11, singing "Walk as Children of Light" by Terry Taylor.*

PUPPETS FOR CHRIST

Amy Cropper, Director



Due to high demand, not only are we going to have our normal spaghetti dinner show, but we are also offering a **SECOND** show this time. This will allow more people to be able to attend. The dates are as follows:

- **Friday, March 15 at 6:00 pm - Spaghetti Dinner and Show**
- **Sunday, March 17 at 3:00 pm - Make Your Own Ice Cream Sundae and Show (NO SPAGHETTI AT THIS SHOW)**

In person ticket sales start **TODAY** through March 10th after the CAYR service and before and after the 11:00 service each Sunday. Ticket prices are the same for both shows at \$10/adult, \$5/child (4-12 yrs.) and 3 & under FREE. We will continue to accept exchanges/refunds for those who already have tickets. Please remember to give us your green tickets at the time of exchange. **Green tickets will not be valid for the shows in March.**



Please contact Amy Cropper at puppetboss@comcast.net or at 410-726-2847 with any questions and for exchanges.

Thank you for your continued support of Puppets for Christ!!!!



ASBURY CHILD DEVELOPMENT CENTER

Casey Taylor, Director of ACDC

Member registration and Priority registration was well attended. We still have openings in our 2's – M/W/F & T/TH, 3's – T/TH and Kindergarten classes. Open registration will take place on March 13th @ 9:30am in Fellowship Hall, if you know of anyone interested in any of these classes. Please have them call #410-742-7058 to pick up registration information. If you have additional questions please contact Casey Taylor at casey@asburyweb.org. Thank you!

DAYLIGHT SAVINGS TIME - MARCH 10



It's just a couple of weeks away. Daylight saving time begins on Sunday, March 10, at 2 a.m., when people will move their clocks an hour ahead, or "spring forward," creating an extra hour of daylight in the evening and cutting morning light short by an hour.





The Asbury Service Project has started out 2024 strong with our Pancake Breakfast, Sunday School Assembly and group meeting all happening in January. As we roll into February, we will be serving at Christian Shelter on February 4 and then our next Pancake Breakfast will be on February 11.

I am excited to say that we now have 44 people who are committed to going on our annual trip to Appalachia in June! That's almost a 50% increase over last year! Of the 44, 20 of them are youth, which is more than double last year! This will allow us to have 6 work teams in Appalachia, making a strong presence as the hands and feet of Christ. It is great to see this new growth, as COVID had affected ASP participation in churches everywhere.

This time of year is also when our team members are working hard to raise the remaining funds they need to go on the trip. This year everyone is required to raise a minimum of \$400. Of the \$400, only \$25 stays here with our team. The remaining \$375 is what we have to submit to ASP to cover the fee for each individual who is going on the mission trip. Obviously, to help cover our travel and other trip expenses we have to ask that members raise additional funds and to also help make our car washes and pancake breakfasts a success...and we appreciate ALL of your support as well!

Since 1973, the Asbury congregation has been a key partner in our ministry. If you wish to donate to the ASP ministry, or help sponsor an individual on our team who is still trying to reach their goal, please contact me at: dale73@comcast.net or 410.430.3164.

Another way that you can donate is through our QR code. This is new for us this year. All you do is scan the code, enter your amount and add a note with any specifics you wish. This allows us to accept donations via Google Pay, PayPal, Venmo, and credit cards. There will be a small processing fee for using this service.



Peace in Christ,

Dale Cropper



STAFF SPOTLIGHT - BOB LOVE

Hi, I am Bob Love and I have been in charge of maintenance at Asbury since June 2021. I have been married to Kristen since 2001. We have two children Jackson(19) and Gabby(13). Along with church maintenance I also do maintenance for the Asbury Child Development Center. I love being Mr Bob to all the kids!



I have lived in a lot of places and am kind of a "jack of all trades." A large amount of my life has been spent working in food service, but also a fair amount of construction work. Other jobs I have had are drafting single family houses, high school math teacher (all PA), and ranch hand (WY) on a 200 acre llama farm. I have an associate's degree in Architectural Engineering Technology (Penn State) and a Bachelor's degree in Math, Secondary Education from Marywood University (Scranton, PA).

I enjoy working with my hands, especially fixing things as well as woodworking. Antiquing is another hobby that occupies my time. The local shops know me well!

Even though I am quiet, I care about many things, especially connecting with youth. Another area I am passionate about is mission trips. I have been to Honduras, Haiti, Youthworks (various locations), ASP, the Philadelphia project and have done local mission work. I am excited to lead the middle school Youthworks trip to Harrisburg, PA in June.



MARCH



Carolyn Conners, Chair

Robin Evans

Brenda Martin

Kathy McIntyre

Emily Saulsbury



ADULT SPIRITUAL FORMATION AND MEMBERSHIP
Rev. Kristen Wall-Love, *Director of Spiritual Formation and Membership*

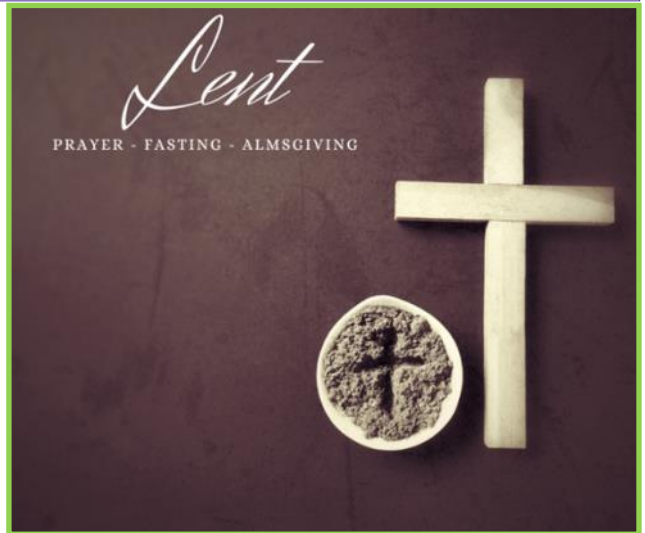
Dear Faith Family,

March's spiritual practice is fasting. Fasting is the act of foregoing a certain thing in order to empty ourselves to receive God. In the spirit of Lent, a season of self-reflection, we often "give up" something during this time. For the past several years I have suggested fasting from something, adding a spiritual practice, or both.

If you have chosen to fast from something during Lent, then you are already plugged into March's practice—keep going! If not, consider taking this month to fast from certain foods, beverages, meals, treats, activity, or behavior that will draw you closer to God (which is the point of fasting!). *If you have an unhealthy relationship with food, it is advised to select something else from which to fast.

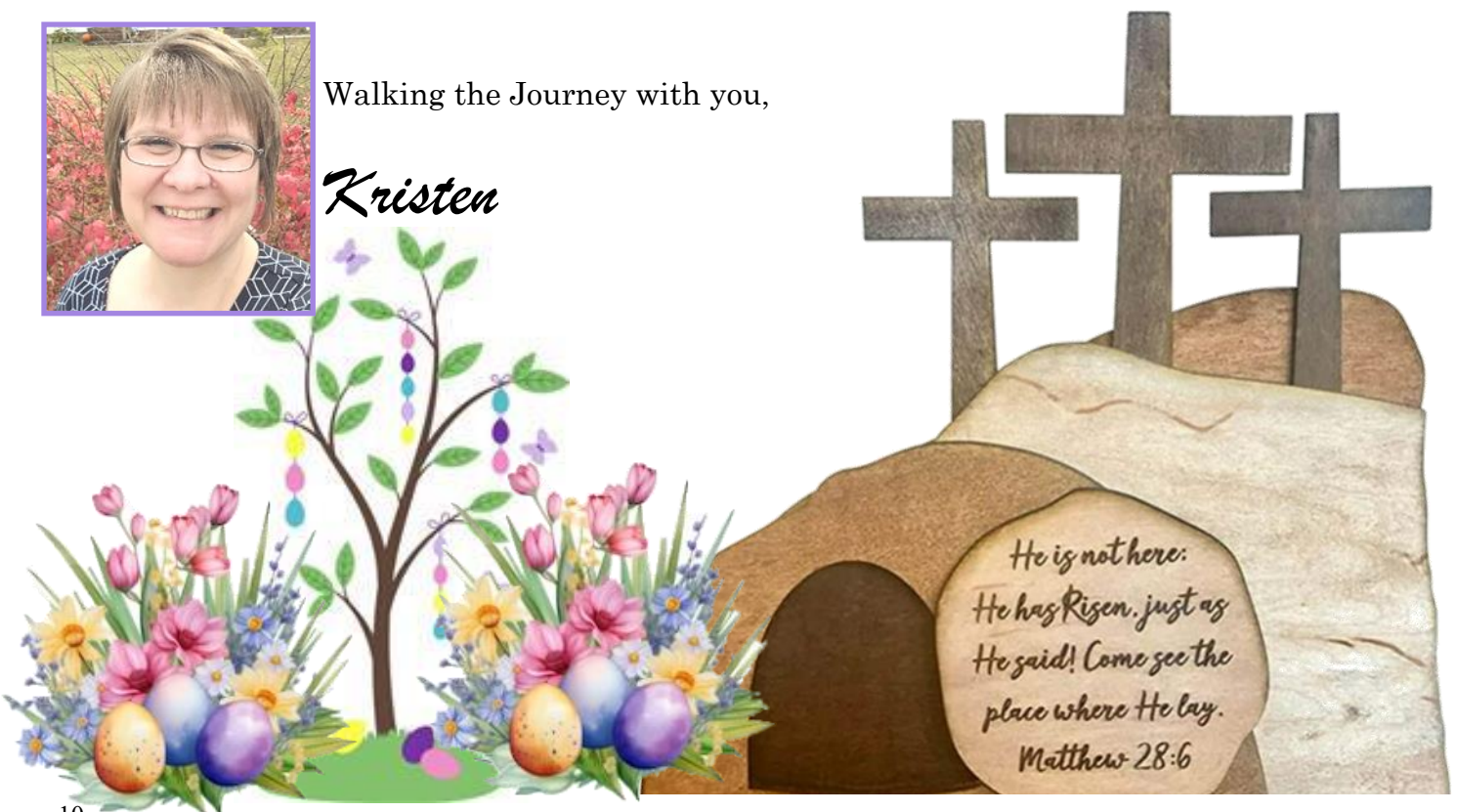
Some ideas: Fast from overspending, complaining, cursing, giving unsolicited advice, technology/social media/phone or video games/streaming services, coffee (or coffee not made at home), fast food/eating out, etc. You can fast from a certain meal and spend the time you would have spent preparing and eating with God.

If you would like ideas, I'm here for you! Commit to this practice by checking the box on your connection card or email me: kristen@asburyweb.org. Blessings on your fast!



Walking the Journey with you,

Kristen



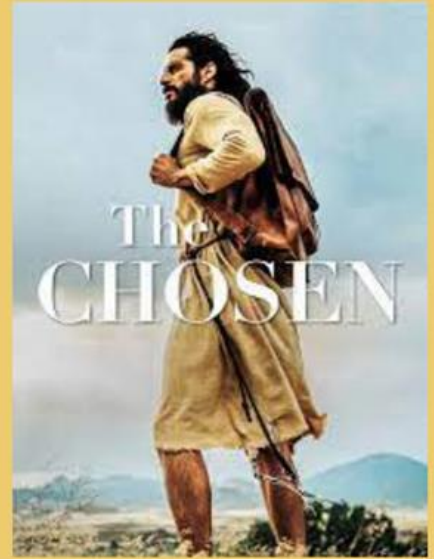
Freestyle Adult Sunday School

IN THE LIBRARY, 10:00 AM

We will begin by discussing "The Chosen," a popular creative series based on the gospel texts.

All are welcome.

Come and be part of the conversation!
(No preparation required)



ARE YOU OUR NEXT

Member?

The Spring Membership Event is Sunday, April 21st at 12:30pm

RSVP TO KRISTEN@ASBURYWEB.ORG



CIRCLE NEWS



Deborah Circle: Maggie Fulkrod

We meet the last Tuesday of the month at the church, 6:30-8pm.
Next meeting March 26th.

Contact Maggie Fulkrod with questions mfulkrod1@verizon.net.

Dorcas Circle: Susan Cropper

Dorcas Circle will meet Tuesday, March 12th at 10:00 am at Asbury in the Fox Room. We continue to discuss Joyce Meyer's book, 110 Ways to Simplify your life. We will be providing lunch for the Joseph House on March 19th. Call Susan Cropper if you have questions: 410-845-8874.

Eve Circle: Amy Cropper

Eve meets at Tracy Locke's house on March 20th at 7:15 pm.

Joanna Circle: Carol Bisker

Joanna will meet on Monday, March 11 at 10 AM at the home of Carol Bisker. We will complete our Easter cards.

CALLING ALL ASBURIANS - THE ALTAR GUILD WANTS YOU!

Please join us for an informational tea on Sunday, March 3rd, in the Soul Cafe after the 11:00 service. All are welcome – men and women—to join us. This isn't your mother's Altar Guild! You can also contact me at jeanlaws@comcast.net or 410-430-8714 (call or text).

EASTER LILIES

Altar Guild is excited to be able to welcome the Easter season with the tradition of decorating the church Sanctuary and Fellowship Hall with beautiful Easter Lilies. We are excited to fill the church with the beauty of the live Easter Lilies.

During Easter, church members purchase lilies for the altar to recognize friends and loved ones they want to honor or remember. For each lily donation, the names are listed in the Asburian, as well as the Easter service bulletin.

This year the lilies will be **\$8.00** each. All orders are due no later than **Friday, March 22**.

Let's welcome the season of Easter by donating a lily in memory and/or in honor of family and friends. Forms are located in the Welcome Centers, please fill out the form and return it to the church. **Thank you!**

***** You are welcome to take your Easter Lilies, after the conclusion of the 11:00 a.m. service.**



OPEN HEARTS, OPEN MINDS, SPRING 2024



As the new year begins, this adult Sunday School class continues to explore the issues of what it means to be a Christian and what that looks like. In the fall we used Bishop Reuben Job's series entitled *Three Simple Rules*. During Advent, Dr. William Willamon's *Advent and Incarnation* emphasizing the period of time during which the Jews awaited the coming of the Messiah, questions related to Incarnation. He also addressed what God and Jesus have called Christians to do as we wait for the Second Advent of Christ. Our spring study is taking us back to using the DVD series *Saving Jesus*.

All are welcome to join us in the Mackey Room at 9:45 am when we share joys and concerns before beginning the lesson for the day at 10:00 am



DATE	SESSION
3/3	Saving Jesus: The Atonement
3/10	Saving Jesus: Resurrection of Christ
3/17	Saving Jesus: Resurrection of Christ
3/24 Psalm	Saving Jesus: Why Jesus is Worth Saving?
3/31	EASTER — OPEN CHAT
4/21	Saving Jesus: Why Jesus is Worth Saving?



The Bible 101 class is now studying the book of First Corinthians. Because of its geographical location it was hoped that the gospel would spread all over the known world from the Church in Corinth! Paul and his team established a very strong Church in Corinth and moved on to Ephesus after a year and a half. But after 3 years Paul received news that the Church in Corinth was in trouble re: leadership, incest and class snobbery.

Paul dictates a letter to the Corinthian Church and reminds them that the CHURCH is GOD'S CHURCH and always keep it CHRIST CENTERED. Bible 101 will be studying Paul's First Letter to the Church at Corinth until the end of May.



ASBURY NEWS

Opportunity Shop

Donations:

Monday 8:30 am - 12:00 pm

Thursday 10:00 am - 1:00 pm

Or call the church for an appointment!

Sales: Thursday 10:00 am - 1:00 pm

Looking for ways to help? We need volunteers to work as cashiers on Thursdays, and if you are cleaning out your closets, we need household items and clothing! All items need to be clean and functional. Tax receipts available.

Thank you for supporting this important ministry!

158 W. Market Street, Salisbury, MD

Check us out on Facebook.

Salisbury Urban Ministries Donation requests for January:

Lazarus Food Pantry

- Dessert Mixes
- Gravy Mixes

Kids Cafe

- Mandarin Orange Snack Cups

Men's Welcome Center

- Saltine Crackers
- Vienna Sausages

SUM Information Center

SUM has now have its own information center, located at the Main Welcome Center by the Narthex. Flyers for monthly donation requests and other special project information can be found here.

Please drop off your donations in/near the large pots in sanctuary hallway. If you prefer to order online, have your donations delivered to: Salisbury Urban Ministries, 326 Barclay St., Salisbury, MD 21804. Or call 410-749-1563

*****Please note that with the winter weather coming, if Wicomico County Schools are closed, Salisbury Urban Ministries will be closed as well.**



CHURCH ANNOUNCEMENTS



MEMORIALS

William V. Fulkrod (In memory of his birthday)
Steve & Maggie Fulkrod



BAPTISM

Lincoln Oliver Gicking, 2/25/2-24



MEETINGS SCHEDULE

Date	Day	Time	Meeting
6	Wed	6:00 p.m.	SPRC
12	Tue	5:30 p.m.	Board of Trustees
13	Wed	7:00 p.m.	Leadership Team
14	Thu	5:30 p.m.	Finance Committee
26	Tue	10:00 a.m.	Altar Guild
27	Wed	6:00 p.m.	UWIF



***Are you receiving a printed Asburian but would rather see it in color, on our website? Or would you rather not receive it? Please let us know. ***



Senior Pastor: *Rev. Dr. Tom Pasmore*
Administrative Office Manager: *Lydia Childs*
Administrative Assistant: *Sheri Burchard*
Director of Music Ministries: *TBA*
Director of Children and Care Ministries:
Heather Harman
Director of Finance and Building: *Janice Ilczuk*
Director of Adult Spiritual Formation and Membership: *Rev. Kristen Wall-Love*
Director of Youth & Family Ministries:
Brooke Christensen
Maintenance Worker: *Bob Love*
ACDC Director: *Casey Taylor*
ACDC Asst. Director: *Danna Abbott*



Asbury United Methodist Church
1401 Camden Avenue
Salisbury, Maryland 21801
Phone: 410-749-2131
Fax: 410-749-2914
Email: asbury@asburyweb.org
Website: www.asburyweb.org



the ASBURIAN

Return Service Requested

Non-Profit org.
U.S. Postage Paid
Salisbury, Maryland
Permit No. 29